



Hot Tea

Featuring... ask your barista for a complete...

**NO LAMINATION
REQUIRED**

Pot of Tea

A pot of tea of your choice

Tea Flight

Broaden your tea palette with a flight of tea featuring 3 samples of carefully selected teas and tisanes.

(Check with your Barista for availability).

House Tea Cup

Expertly prepared...

**SOFTER FEEL
EASILY FOLD**

Chai Latte

Steamed milk with all-natural lightly sweetened chai

GRANDE
45 OZ.

2.95

4.75

SHORT TALL GRANDE
12 OZ. 16 OZ. 20 OZ.

1.95

2.95

4.45

4.10 4.75 5.35



Iced Tea

Iced Tea

Ask your barista

Everyday Tea Blend

Lemonade Mint, Raspberry, Peach Orange, Smooth Sweet, Cherry Ginger Infused

Thai Iced Tea (Cha Yen)

Almost like a latte, but made with tea

Tea Frappe

Milk and ice blended with Japanese powdered green tea

RECYCLE

3.50 4.35

4.50 5.25

4.25 5.10

**DRY TONER & HP INDIGO
COMPATIBLE**

www.cafedechat.com

855-537-6691

Brewed
Awakening

KERNOWPRINT
DRY TONER

ECO Pro Lite
130HEPP 130 µ / 150gsm

MADE WITH
40%
Less Plastic

Drink Menu

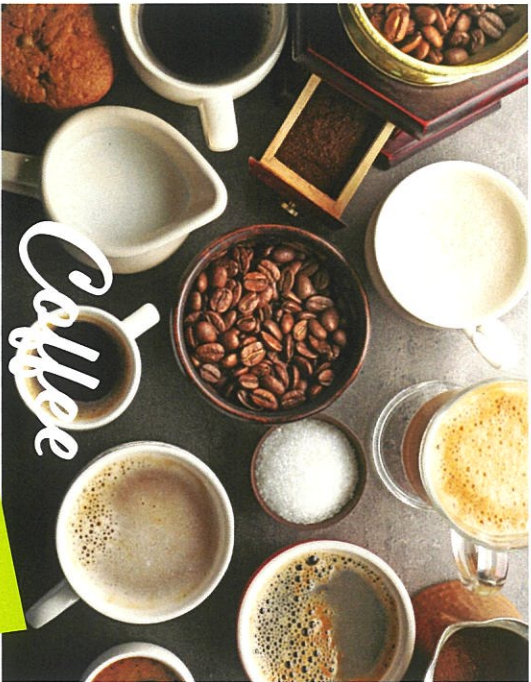


Tailored to your taste, each hot or iced espresso beverage is expertly prepared to honor the tradition, beauty and artistry of espresso into a drink you'll love.

**Virtually
INDESTRUCTIBLE**

Latte	3.50	3.50	3.95
Espresso & steamed milk			
– with flavor shot	3.75	4.25	4.70
Cappuccino	3.00	3.50	3.95
Espresso & foamed milk			
– with flavor shot	3.75	4.25	4.70
Mocha	3.75	4.25	4.70
Espresso, steamed milk & French chocolate, topped with homemade whipped cream			
– with flavor shot	4.50	5.00	5.45
Americano	2.25	2.75	3.00
Espresso & hot water			
Double Espresso	2.00		
2 oz. of espresso			
Nervous Customer			
Espresso and a			
Add 1 oz. Espresso	2.00		
Add 1 oz. Flavor Shot	.75		

**Tear & Chemical
RESISTANT**



**A mineral-filled SYNTHETIC
produced with up to
40% NATURAL
mineral content**

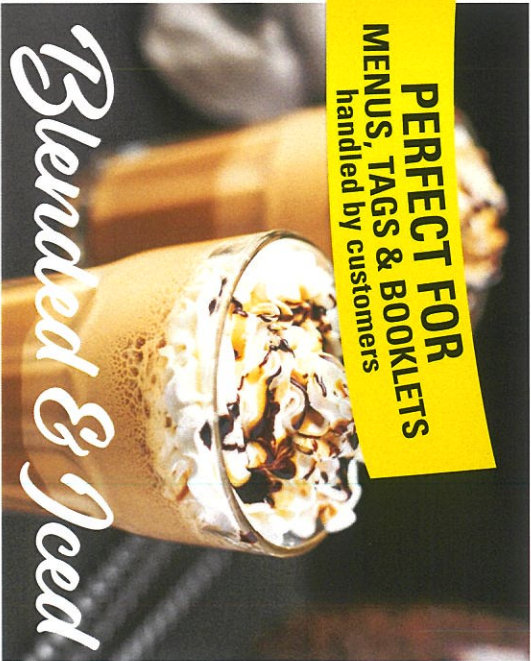
House Cup	1.66	1.89	2.11
– refill	.50		
Coffee-to-Go	1.66	1.91	2.16
Refills not applied			
Café au Lait	2.50	2.75	3.00
Drip coffee and steamed milk			

PRINTS LIKE PAPER

Hot & Delicious

Select from these non-coffee beverages to warm up!

	SHORT 12 OZ.	TALL 16 OZ.	GRANDE 20 OZ.
Hot Chocolate	3.25	3.60	3.95
Steamed milk and French chocolate topped with whipped cream			
Steamer	2.75	3.25	3.75
Steamed milk with 1 oz. flavor (combo) of your choice, topped with homemade whipped cream			



Refresh with any of these iced and blended drinks! 6 OZ.

LOWER CARBON
Footprint than other Synthetics

Frappe	5.25
Vanilla	
and coffee, topped with homemade whipped cream	
– add an additional 1 oz. flavor	
Frozen Hot Chocolate	4.50
Milk with 20 below (frozen) hot chocolate blended with ice, topped with whipped cream	
Italian Soda	2.50
House sparkling water with a flavor (combo) of your choice	
– with cream	3.00
Fruit Smoothie	3.95

A lactose-free and fat-free fruit puree blended with real fruit (no high fructose corn syrup, artificial flavors nor preservatives), select from: Strawberry, Four-Berry Blend, Pineapple Paradise, Mango, and Butternut Squash with Mango.

NIR EQUIPMENT
Detectable by
within the recycling sector

KERNOWPRINT ECO PRO LITE

A mineral-filled polypropylene produced with up to 40% natural mineral content. A more environment friendly solution reducing the amount of total plastic being used during the production process. This helps meet sustainability goals in areas where recycling isn't available.

KernowPrint ECO Pro Lite is a durable Synthetic paper Compatible for both Dry Toner & HP Indigo. Specifically engineered and coated to provide a softer feel, better flexibility & foldability, reduced stretch & distortion, or jam – even in most demanding print conditions.

WHY CHOOSE US?

KernowPrint ECO Pro Lite HEPP is a Polypropylene that contains up to 40% natural minerals as a replacement for non-renewable fossil fuels (oil) which enhanced the carbon footprint and help reducing its CO2 Emissions 80% lower than of PP/LDPE**. A step forward towards a durable synthetic offering a more environment friendly and sustainable solution for your business and your customers.

FEATURES

- 40% less plastic more for the environment
- Perfect feel for menus, tags, and booklets handled by customers
- Easily folds, creases, stitches, and glues just like paper
- Weatherproof, waterproof, chemical proof and virtually indestructible!
- Aqueous base coating compatible for both Dry Toner & HP Indigo
- Reduced CO₂ emission into the atmosphere
- Reduced TiO₂ pigment consumption
- Reduced water consumption of raw materials
- Reduced energy consumption during production
- Detectable by NIR equipment that is used within the recycling sector

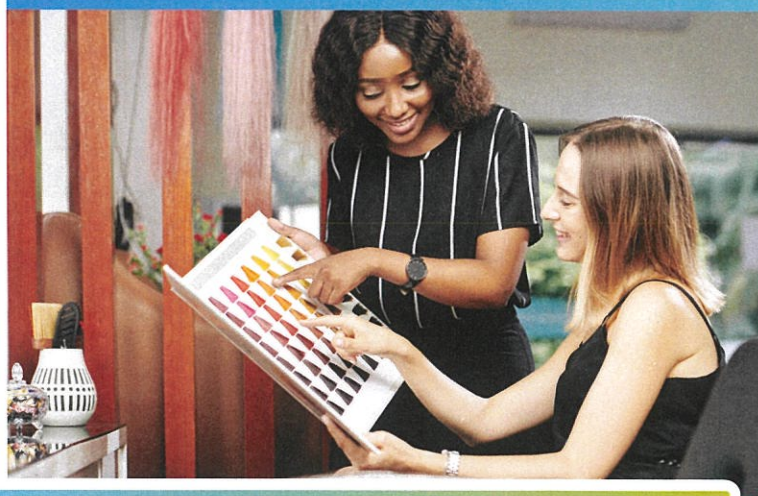


KERNOWPRINT®

DRY TONER

KERNOWPRINT® ECO Pro Lite 130HEPP

The new digital synthetic paper
**MADE WITH
40% LESS PLASTIC**



A PERFECT SOLUTION

Customers looking for significantly more environmentally friendly and sustainable solutions, but still wanting a durable product that offer good value alongside good ethical practice and a clear conscience.

NO LAMINATION REQUIRED

- Weatherproof & Waterproof
- Tear & chemical resistant
- OEM tested & certified
- Prints like paper

**MADE WITH 40%
LESS PLASTIC**

KernowPrint ECO Pro Lite 130HEPP

PRODUCT	SIZES	PRODUCT CODE
130µ KernowPrint ECO Pro Lite HEPP Matt white	A4, A3, SRA3	130HEPP
160µ KernowPrint ECO Pro Lite HEPP Matt white	A4, A3, SRA3	160HEPP
210µ KernowPrint ECO Pro Lite HEPP Matt white	A4, A3, SRA3	210HEPP
260µ KernowPrint ECO Pro Lite HEPP Matt white	A4, A3, SRA3	260HEPP
310µ KernowPrint ECO Pro Lite HEPP Matt white	A4, A3, SRA3	310HEPP

COMPATABILITY

Laser/Dry Toner: ★★★★★ HP Indigo: ★★★★★ Inkjet: N/A

TESTED FOR

OKI **océ** **intec** **Canon** **Kodak**
xerox **KONICA MINOLTA** **RICOH**

RECOVERY & RECYCLING INFORMATION



Polypropylene (PP) is more environmentally friendly than some other plastics, a thermoplastic polymer which is widely used for many applications. It's also used by many industries from automotive to medical, and retail applications. As a result, polypropylene recycling has become a necessary function of the polypropylene life cycle. PP is recyclable category 5 and doesn't release as many toxins as plastics, such as PVC.

Where can you recycle polypropylene?

Estimates suggest that PP from recycling emits 88 per cent less CO2 than producing it from scratch. The good news is that the demand for recycled PP is strong. We recommend checking with your local municipality or waste hauler for suitable polypropylene recycling programs near you. Polypropylene can be repurposed to create dishware, gardening materials, containers, bricks, storage racks, bins speed bumps etc.

PHYSICAL PROPERTY		130HEPP	160HEPP	210HEPP	260HEPP	310HEPP	STANDARD
Total Weight	gsm	150 +/- 4	180 +/- 5	240 +/- 7	300 +/- 10	350 +/- 12	ISO 536
Total Thickness	µ	130 +/- 4	160 +/- 5	210 +/- 7	260 +/- 10	310 +/- 12	ISO 534
Total Thickness	mil	5.1 +/- 0.16	6.3 +/- 0.2	8.3 +/- 0.28	10.2 +/- 0.4	12.2 +/- 0.47	ISO 534
Tensile Strength	MD (N/mm2)	26	24	24	24	24	ISO 527-3
	TD (N/mm2)	21	22	22	22	22	
Tensile Strength	MD (psi)	3770	3480	3480	3480	3480	
	TD (psi)	3044	3190	3190	3190	3190	
Elongation	MD (%)	350	250	250	200	150	
	TD (%)	100	100	100	100	100	
CIE Whiteness	CIE WI	>118	>118	>118	>118	>118	ASTM E313
Opacity	%	>97	>97	>98	>99	>99	TAPPI T519
Gloss 60°	%	<4	<4	<4	<4	<4	ISO 2813
Overall Toughness		★★★★	★★★★	★★★★	★★★★	★★★★	
Outdoor Use		★★★★	★★★★	★★★★	★★★★	★★★★	
Heat Resistance		★★★★★	★★★★★	★★★★★	★★★★★	★★★★★	
Chemical Resistance		★★★★	★★★★	★★★★	★★★★	★★★★	
Rigidity		★★★★	★★★★	★★★★	★★★★	★★★★	

RECOMMENDED CONDITIONS

Printroom	10°C - 30°C (50°F - 86°F)	40% - 55% RH
Storage	10°C - 20°C (50°F - 68°F)	20% - 55% RH

* Uncoated PP

** Typical carbon footprint stated by raw material supplier

© 2022 Copyright Sensitisers Group

Please return unused product to its original packaging. Shelf Life: 24 months after delivery (under recommended storage conditions). The information provided herein is correct to the best of our knowledge. No liability for any errors, facts or opinions is accepted. We recommend users make their own assessments to satisfy themselves as to the suitability of this product for their application.